

Community Planning and Partnership Meeting

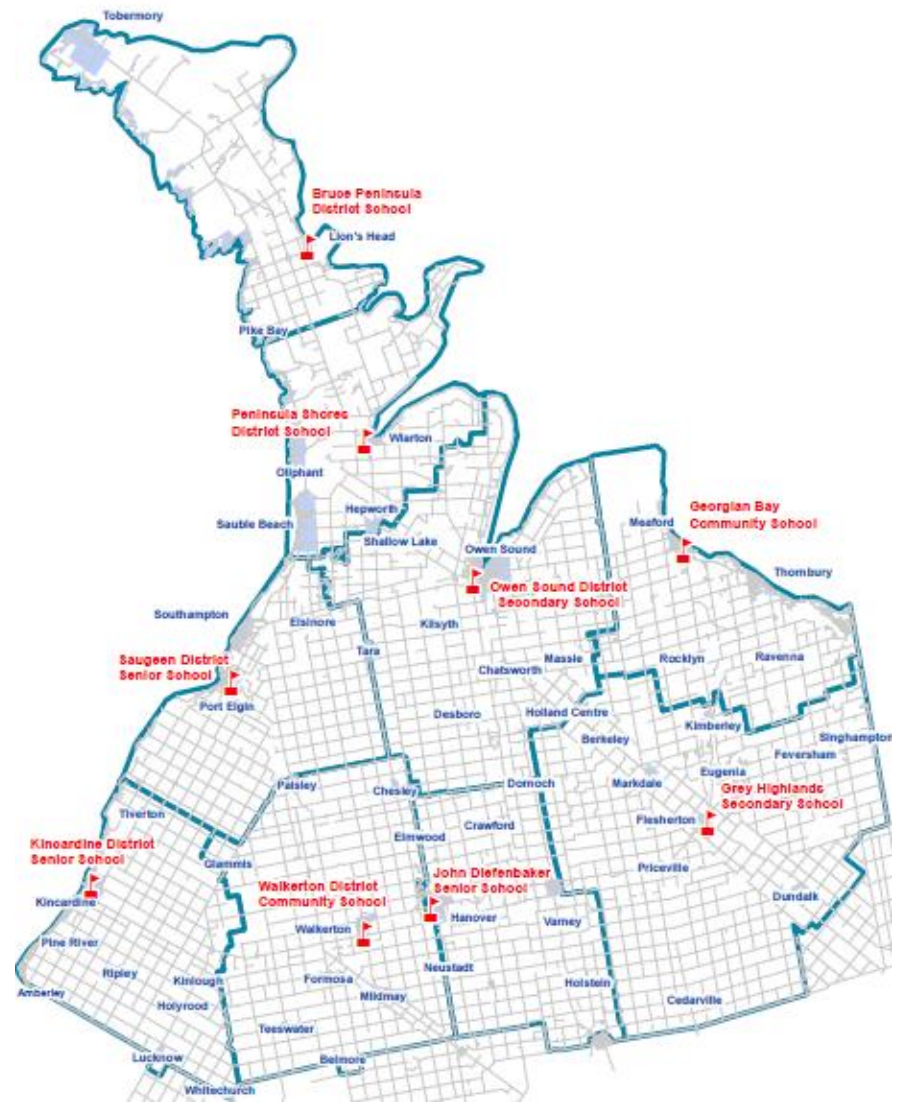
April 9, 2024



Agenda

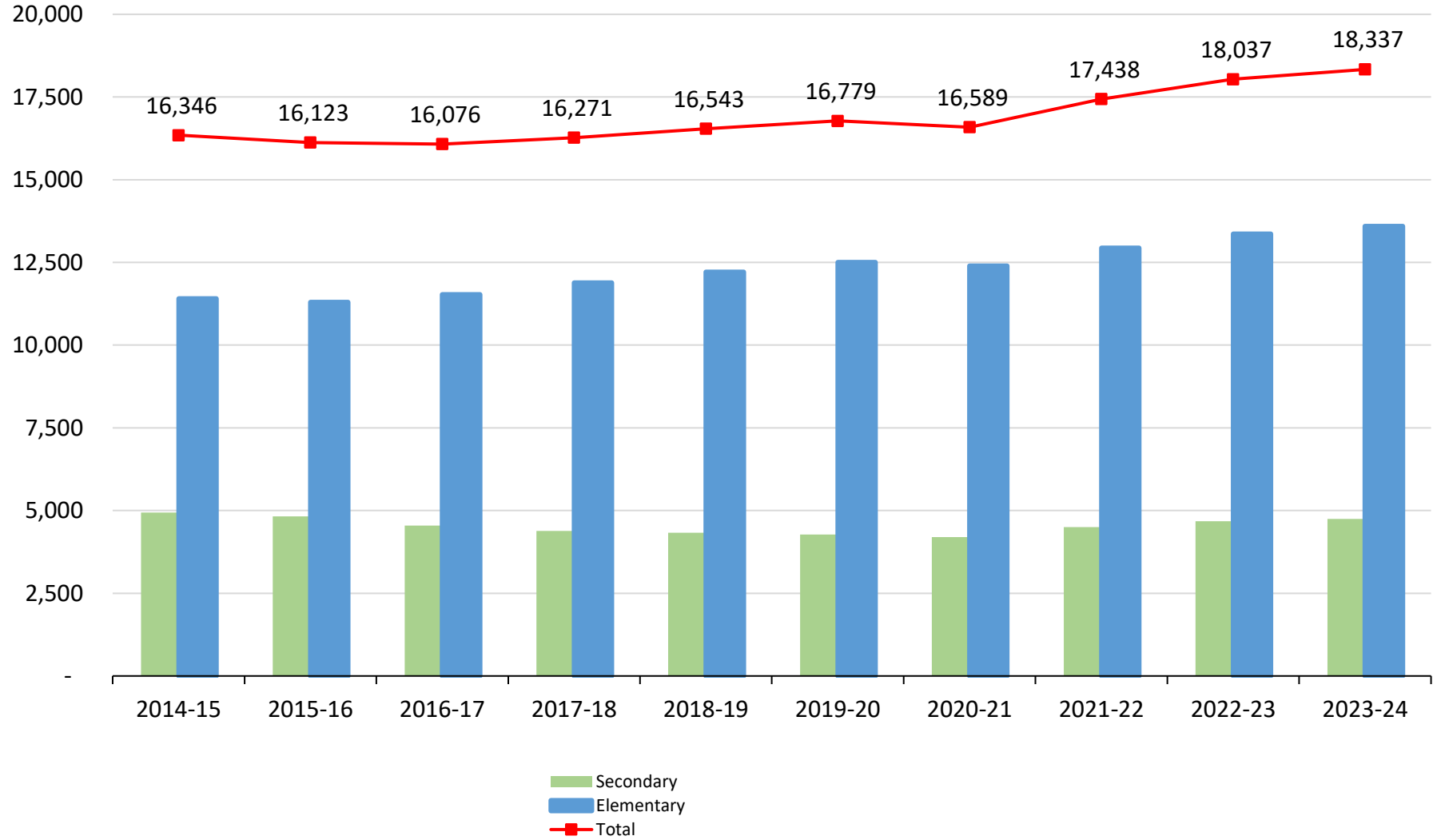
- Acknowledgements and Introductions
- Welcome
- Bluewater District School Board Update
- Community Presentations
- Questions
- Closing Remarks

Bluewater District School Board Overview

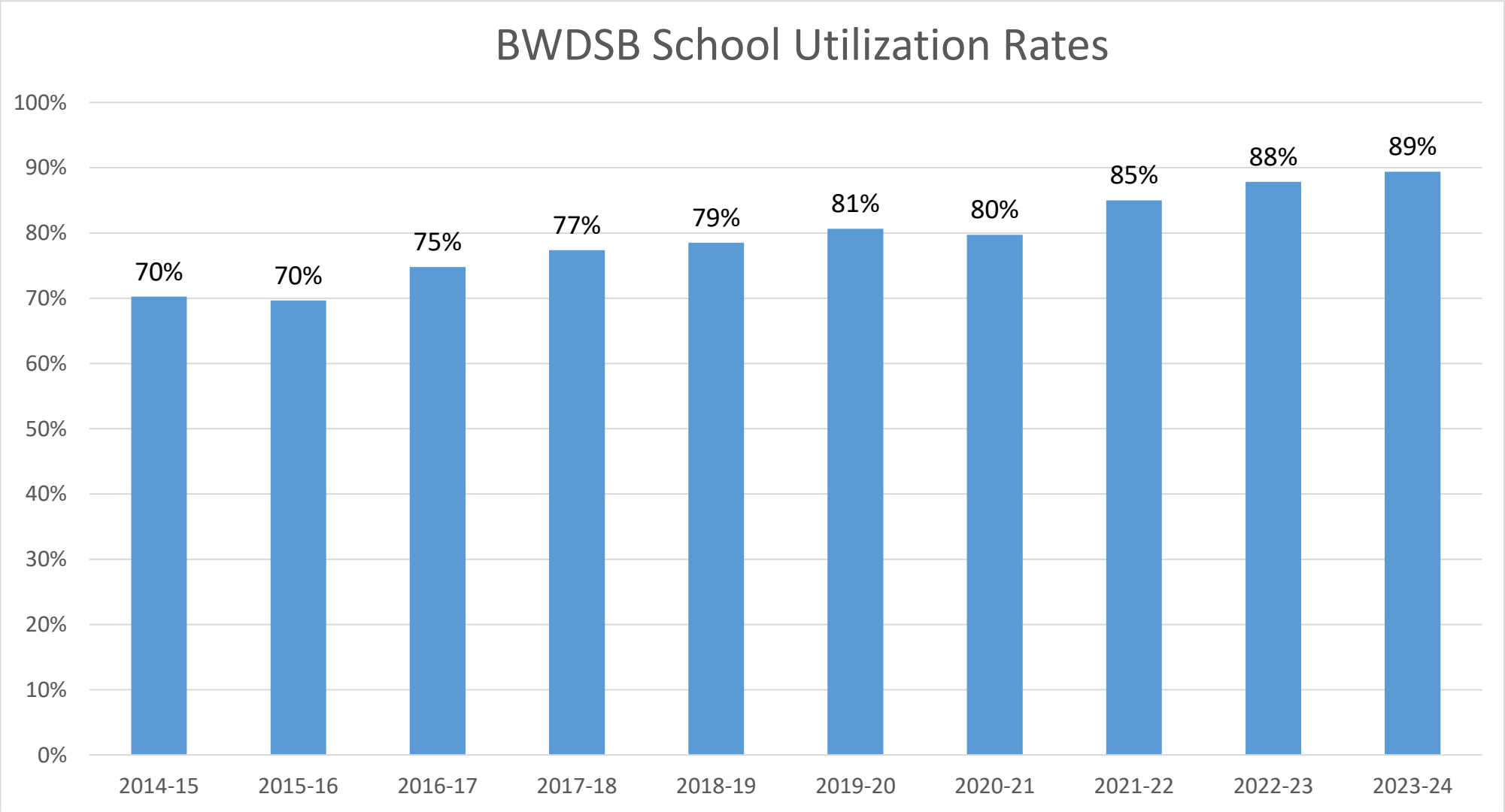


Enrolment

BWDSB 10 Year Average Daily Enrolment (ADE)



School Utilization



Unused Pupil Space

School	2023-24 ADE	Available Capacity	Utilization	Unused Pupil Spaces	Community
St. Edmunds PS (JK-3)	16	84	19%	68	Tobermory
Peninsula Shores CS (JK-12)	403	749	54%	346	Wiaraton
Lucknow Central PS	167	283	59%	116	Lucknow
Hillcrest Central PS	146	245	60%	99	Teeswater
Normanby CS	197	317	62%	120	Ayton
Kincardine Township-Tiverton PS	235	375	63%	140	Kincardine
Hepworth Central PS	364	568	64%	204	Hepworth
Mildmay-Carrick CS	174	268	65%	94	Mildmay
Grey Highlands SS	675	1011	67%	336	Flesherton
Sullivan CS	163	236	69%	73	Desboro
Chesley District CS	347	502	69%	155	Chesley

Ministry Guidelines for Partnership



Source: Ministry of Education Community Planning and Partnership Guideline (March 2015)

BWDSB Guidelines for Partnering

- Community Planning and Partnership – BP 2360-D
- Community Planning and Partnership – AP 2360-D
 - Eligibility of Partners
 - Available Schools
 - Formal Lease Agreement

Current Partners

Childcare

EarlyON

Municipalities

Community Use of Schools

- Physical Education Activities/Sports
- Art Camps/Groups
- Georgian Bay Symphony
- Community Living and Special Olympics
- Reciprocal agreements with local municipalities

Bluewater District School Board

Learning Today, Leading Tomorrow



[Home](#) [About Us](#) [Schools](#) [Families/Community](#) [Students](#) [Programs](#) [Trustees](#)

Community Use of Schools

[Bluewater District School Board](#) / [Families/Community](#) / [Community Use of Schools](#)

Ontario Regulation 374/23

- Ontario Regulation 374/23 Acquisition and Disposition of Real Property (replacing Ont. Reg. 444/98), effective January 1, 2024

New guidelines for acquisition and disposal of properties

Change in process for determining surplus properties and potential buyers

Removal of surplus property notifications to the predetermined list of entities

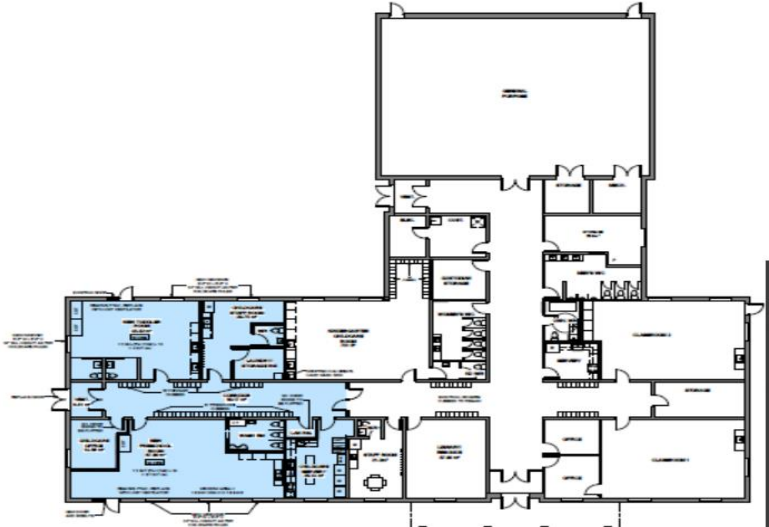
Recently Completed Build Projects

New Standalone Child Care - Egremont Community School



Recently Completed Build Projects

New Child Care Retrofit – St. Edmunds Public School



Ongoing / Upcoming Projects

- Replacement for Beavercrest Community School (JK-8) in Markdale
- Replacement for Kincardine District Senior School (7-12)
- School Renewal and Renovations
 - more than \$17.7 million in capital renewal projects being planned for summer completion in 2024

Build Projects

Beavercrest Community School - Markdale



Build Projects

Beavercrest Community School - Markdale

- New facility to accommodate 376 students in the town of Markdale
- Includes child care and EarlyON
- Over \$19 million funding commitment from the Ministry of Education



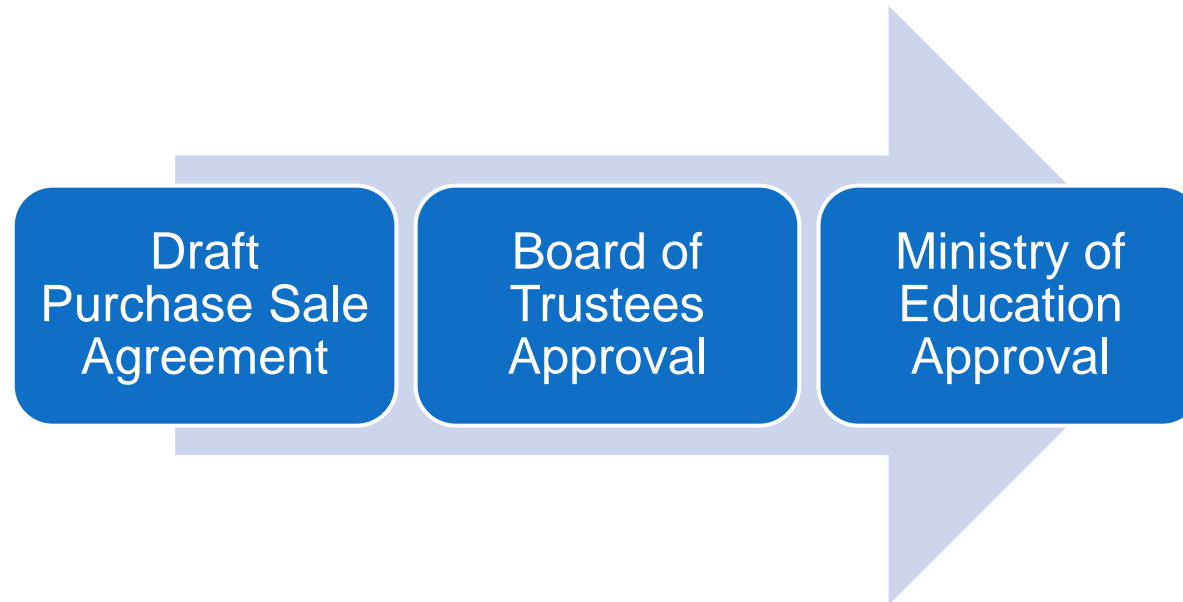
Groundbreaking Ceremony held July 6, 2024

Build Projects

Replacement Kincardine District Senior School

- Over \$26 million in Ministry Funding
- Replacement school to accommodate 881 students
- Continue to work with stakeholders to secure land

Next Steps:



Submitted Business Cases

Dundalk Elementary

- Growth School
- JK-8
- 735 pupil spaces
- Child Care Joint Submission

Saugeen Shores Elementary

- Growth School
- JK-6
- 409 pupil spaces

Kincardine Elementary

- Replacement School
- JK-6
- 964 pupil spaces
- Child Care Joint Submission

Business Cases

Information required for Capital Priority funding request

- Current enrolment – area of schools
- Projected student growth – area of schools
- Facility Condition
- Early Years Joint Submission Criteria
- Suggested boundaries / program changes

Business Cases

New requirements in 2023

- Project Readiness Assessment - is it shovel ready?
- Design Standardization – effective and efficient
- Board Performance Assessment
- Enhanced Accountability Framework – reduce administrative burden
- Long-Term Growth Needs

Future Planning

Determining and managing growth

Type of development – family, adult or lifestyle

Student yield per household

Official Plans – consider lands for future schools

Facility Planning Strategy

- Updating 2024
- Recommendations for the board
 - Business Cases
 - Renewal Work
 - Boundary Reviews
 - Accommodation Reviews (current ministry moratorium)

Connect with us

Andrew Low

Superintendent of Business Services and Treasurer

andrew_low@bwdsb.on.ca



Shelley Crummer

Business Analyst

shelley_crummer@bwdsb.on.ca

519-363-2014

www.bwdsb.on.ca